



KMP COLLEGE OF PHARMACY

Asamannoor P.O., Poomala, Perumbavoor, Ernakulam, Kerala – 683 549

QP Code: **319202**

Reg. No.:

II Semester B. Pharm (2019 Batch) Degree Model Examinations (Theory), April -2021

BP202T - Pharmaceutical Organic Chemistry (2017 Scheme)

Time: 3Hr.

Max. Marks: 75

- Answer all questions
- Draw diagrams wherever necessary

Essay

(2x 10=20)

1. Explain the Nucleophilic addition reaction in carbonyl compounds with mechanism.
2. What is isomerism? Give different types of isomers with example.

Short Notes

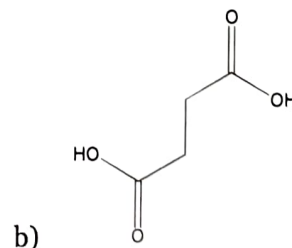
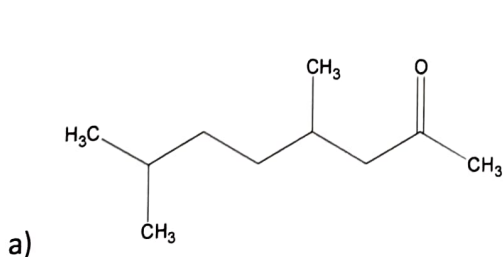
(7x5=35)

3. SN₁ and SN₂ Reactions.
4. Markownikoff's rule.
5. Tests to distinguish alcohols.
6. Aldol condensation reaction.
7. Acidity of carboxylic acids and effect of substituents on acidity.
8. Basicity of amines and effect of substituents on basicity.
9. Perkin condensation.

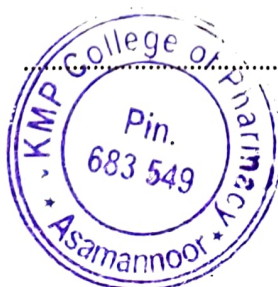
Answer Briefly:

(10x2=20)

10. Give Structural formula for, a) Cinnamic acid b) Glycerol
11. Mention the uses of, a) Chloroform b) Vanillin c) Acetyl salicylic acid d) Amphetamine.
12. Any two qualitative tests for amines.
13. Allylic rearrangement.
14. Saytzeff's rule.
15. Anti-Markownikoff's rule.
16. Any two methods of preparation for alcohols.
17. Cannizzaro reaction.
18. One method of preparation for each for aldehyde and ketone.
19. Write the IUPAC name for,




PRINCIPAL
KMP College of Pharmacy





KMP COLLEGE OF PHARMACY

Asamannoor P.O., Poomala, Perumbavoor, Ernakulam, Kerala – 683 549

QP Code:

319203

Reg. No.:

II Semester B. Pharm (2019 Batch) Degree Model Examinations, April-2021

BP203 T – Biochemistry (2017 Scheme)

Time: 3 Hrs

Max. Marks: 75

- Answer all questions
- Draw diagrams wherever necessary

Essay

(2x10=20)

1. Discuss about the biosynthesis of purine nucleotide
2. Describe about HMP shunt. Add a note on its significance

Short Notes

(7x5=35)

3. Electron transport chain
4. Urea cycle
5. Beta oxidation of saturated fatty acids
6. RNA synthesis
7. Enzyme inhibitors with examples
8. Explain the general reactions involved in amino acid metabolism
9. Glycogenesis

Answer Briefly

(10x2=20)

10. Gluconeogenesis
11. Catabolism of Heme
12. Gout
13. Biological significance of cyclic AMP
14. Coenzymes
15. Redox potential
16. Hypercholesterolemia
17. Allosteric enzyme regulation
18. Albinism
19. Genetic code

PRINCIPAL

KMP College of Pharmacy





KMP COLLEGE OF PHARMACY

Asamanoor P.O., Poomala, Perumbavoor, Ernakulam, Kerala – 683 549

QP Code:

319203

Reg. No.:

II Semester B. Pharm (2019 Batch) Degree Model Examinations, April-2021

BP203 T – Biochemistry (2017 Scheme)

Time: 3 Hrs

Max. Marks: 75

- Answer all questions
- Draw diagrams wherever necessary

Essay

(2x10=20)

1. Discuss about the biosynthesis of purine nucleotide
2. Describe about HMP shunt. Add a note on its significance

Short Notes

(7x5=35)

3. Electron transport chain
4. Urea cycle
5. Beta oxidation of saturated fatty acids
6. RNA synthesis
7. Enzyme inhibitors with examples
8. Explain the general reactions involved in amino acid metabolism
9. Glycogenesis

Answer Briefly

(10x2=20)

10. Gluconeogenesis
11. Catabolism of Heme
12. Gout
13. Biological significance of cyclic AMP
14. Coenzymes
15. Redox potential
16. Hypercholesterolemia
17. Allosteric enzyme regulation
18. Albinism
19. Genetic code

PRINCIPAL
KMP College of Pharmacy





QP Code: **319204**

Reg. No.:

**II Semester B. Pharm (2019 Batch) Degree Model Examinations,
April-2021**

BP204 T – Pathophysiology (2017 Scheme)

Time:3 Hrs

Max. Marks: 75

- Answer all questions
- Draw diagrams wherever necessary

Essays

(2x10=20)

1. Discuss about the pathophysiology of AIDS.
2. Describe about pathophysiology of Myocardial Infarction.

Short Notes


(7x5=35)

3. Discuss about clinical presentation of Peptic Ulcer.
4. What is atrophy & hypertrophy?
5. What are the complications of Chronic Obstructive Airway Disease (COPD).
6. Write a note on Pathophysiology of Rheumatoid arthritis (RA).
7. Discuss about Tuberculosis (T.B).
8. Explain the different types of Anaemia.
9. Clinical Manifestations of Epilepsy.

Answer Briefly

(10x2=20)

10. Etiology of Gout.
11. Triggering factors of Asthma.
12. Signs and symptoms of Parkinson's Disease.
13. Complications of ARF.
14. Clinical manifestations of Hypertension.
15. Causative organisms of Meningitis.
16. List out any four opportunistic infection.
17. Risk Factors of Osteoporosis.
18. Migration of WBC.
19. Complications of Hyperthyroidism.


KMP College of Pharmacy

